

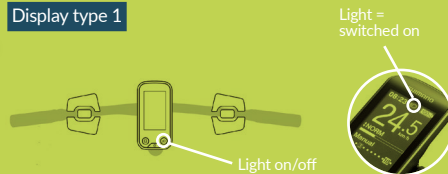
## 6. Don't forget to switch on continuous light!

To ensure that your BikeTrax GPS tracker is powered, you must turn on the continuous light. There are two ways to do this:

1.

### Set continuous light via bike display

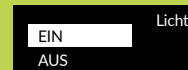
Display type 1



Display type 2



1. Press and hold <A> key until the settings menu opens.
2. Select menu item [Light] with <X>/<Y> and confirm with <A>.
3. Select [Light ON] with <X>/<Y> and confirm with <A>.



## IMPORTANT INSTRUCTIONS

**The initial operation** of your BikeTrax GPS tracker **should be performed outdoors**. This will ensure a fast connection with good network coverage.

**Metallic objects** and coatings can **degrade the reception of GPS, GPRS and GSM signals**. Therefore, it is important that the BikeTrax GPS tracker is not hidden inside the e-bike frame or mounted with the GPS antenna (PowUnity logo) facing inwards. This can affect performance.

# GOOD RIDE

BIKE TRAX GPS anti-theft protection for e-bikes

## ASSEMBLY INSTRUCTION for SHIMANO e-bike systems\*

**Compatible with:**  
Steps E5000 • E5080  
▪ E6100 • E6110  
▪ E6180 • E6002 • E6012  
▪ E7000 • E8000  
▪ E8080

**With additional light adapter** also for Steps ...  
▪ E6000 • E6001  
▪ E6010 • E6050\*\*



15 min.



\*\*available on request at PowUnity



POWUNITY.COM

e-mail: info@powunity.com  
powunity.com

### Set continuous light via „E-Tube Project“ app



1. Download Shimano app called „E-Tube Project“ from the Google Play Store or App Store



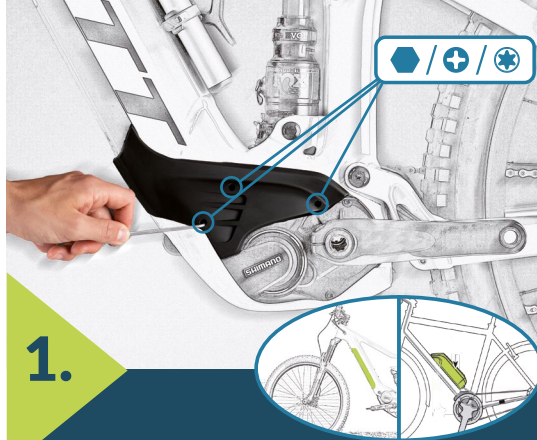
2. In the menu item „Customize“ you can change all settings for your e-bike.
3. Follow the instructions in the app to set up continuous light.

**The Shimano app is free of charge!**

# PACKAGE CONTENTS



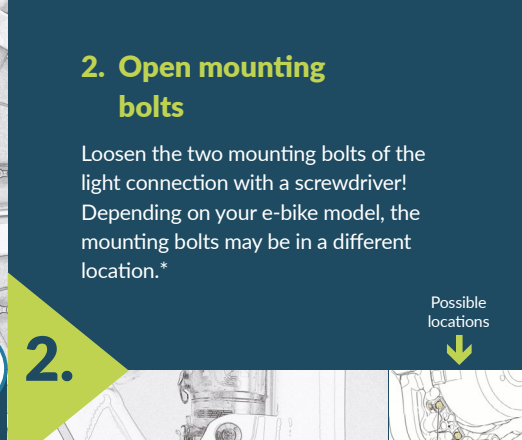
Every e-bike model is different, and especially cable covers, displays, batteries & co. are available in a variety of different designs. **Therefore we ask for your understanding if the illustrations in this assembly instruction and the motor of your e-bike don't correspond.**



1.

## 1. Remove cable cover and battery

The cable cover and battery of your e-bike can easily be removed with the right tools.

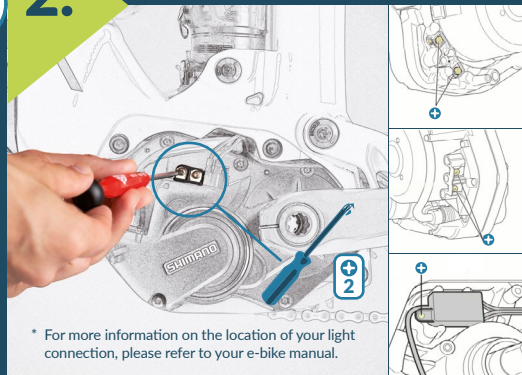


2.

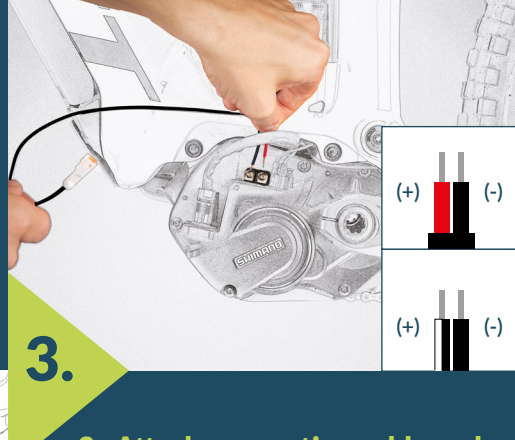
## 2. Open mounting bolts

Loosen the two mounting bolts of the light connection with a screwdriver! Depending on your e-bike model, the mounting bolts may be in a different location.\*

Possible locations  
↓



\* For more information on the location of your light connection, please refer to your e-bike manual.



3.

## 3. Attach connection cable and secure with mounting bolts

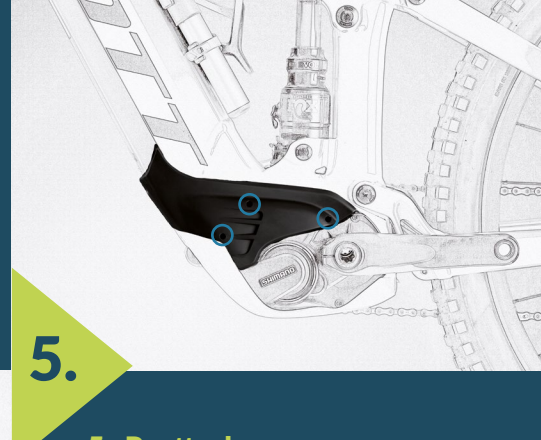
ATTENTION: Depending on availability you will receive a red/black or a black and white/black cable. Please pay attention to correct polarity when positioning the cable (see above).



4.

## 4. Connect BikeTrax GPS tracker and additional battery

Depending on your e-bike model, different mounting points are possible for your Bike-Trax. For example, position it in the skid plate with double-sided adhesive tape.



5.

## 5. Reattach cable cover

Make sure that the mounted parts are under no stress. The cover should fit snugly onto the threaded holes of the frame and be screwed tightly.